



RETRACTABLE AWNINGS

For Technical Support visit us at www.sunsetter.com/ownerscorner or Call Toll Free 800-670-7071 • Fax 877-224-4944

Multi-Channel Remote Transmitter Installation, Replacement and Wall Post Instructions (for standard and All Weather Remote Transmitters)

Tools Needed: Phillips screwdriver and a tool to press the Programming Button (on rear of Remote).

Parts Supplied: Multi-Channel Remote Transmitter, Wall Post Kit.

For use with all SunSetter Motorized Awnings, EasyShades and LED Light Systems

- Use **Section A** to add an additional Remote Transmitter.
- Use **Section B** to replace a missing Remote Transmitter.

**WARNING: FAILURE TO FOLLOW THESE INSTRUCTIONS CAN RESULT IN PERSONAL INJURY!
PLEASE READ THESE INSTRUCTIONS IN ITS ENTIRETY BEFORE ATTEMPTING TO COMPLETE THIS PROCESS.**

Section A

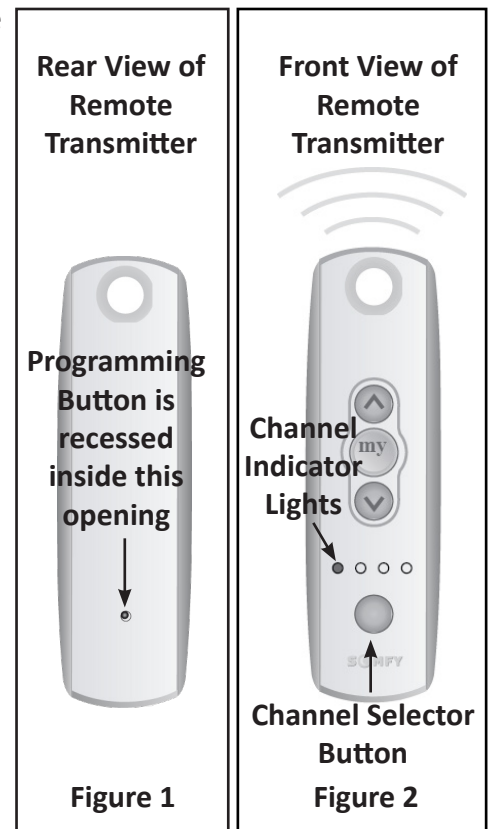
Programming your SunSetter Product to Respond to an Additional Multi-Channel Remote Transmitter:

1. **Press and Hold the Programming Button** (see **Figure 1**) located on the rear of the Remote Transmitter that currently controls your SunSetter Product, hold until the Product responds, then release the Button. *(Product enters Programming Mode. If step 3 is not completed, Programming Mode times out. If this happens, return to step 1.)*
 - A Motor will move, briefly, then stop.
 - The LED Light Strips will blink.
2. Set the new Remote Transmitter to the desired channel.
 - a. **Press and Release the Channel Selector Button**; the active Channel Indicator Light will blink. See **Figure 2**.
 - b. If you need to change the active Channel, press the Channel Selector Button again while the active Channel Indicator Light blinks. The next Channel becomes active.

Note: When all 4 lights blink, channel 5 is active.

3. **Press and Hold the Programming Button** located on the rear of the **NEW** Remote Transmitter until the Product responds with a movement or blink, then release the Button.

Your Product now responds to the new Remote Transmitter. Test the Product with the new Remote Transmitter for proper operation.

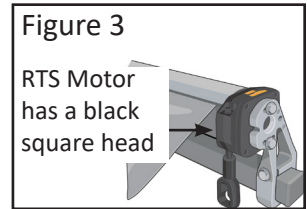


Section B

Programming your SunSetter Product to respond to a replacement Remote Transmitter, when any Remote Transmitter that controls your Product IS NOT available:

• For Motorized Products:

1. Select the desired channel on the Remote Transmitter to control the motorized product.
2. **For RTS Motor only** (see **Figure 3**) connect power to Motor for 1 full minute, do not press any buttons on Remote Transmitter. For Motors other than RTS, go to **Step 3**.
3. Disconnect Power from the Motor for five (5) full seconds.
4. Connect Power to the Motor for ten (10) full seconds.
5. Disconnect Power from the Motor for five (5) full seconds.
6. Connect Power to the Motor. The Motor will respond with a brief movement.
(Times out in two minutes if Programming Button is not pressed as instructed in **Step 8**.)
7. Select the Channel to be used to control the Motor.
 - a. Press and release the Channel Selector Button (see **Figure 2**); the active Channel Indicator Light will blink. See **Figure 2**.
 - b. While the Channel Indicator Light blinks, press the Channel Selector Button again to move to the next channel. That next Channel Indicator Light will blink, indicating it is the active channel.
8. **Press and Hold the Programming button** (see **Figure 1**). The Motor will respond with a brief movement.
9. **For RTS Motor only** (see **Figure 3**), hold the **UP** and **DOWN** buttons until Motor jogs, then hold the **PROGRAMMING** button until Motor jogs again.
10. Test the newly added Remote Transmitter for proper operation of the Motorized Product.



• For the LED Light System:

1. Select the desired channel on the Remote Transmitter to control the LED Light System.
2. Unplug the LED Lights for 5 seconds.
3. Plug in the LED Lights for 15 seconds.
4. Unplug the LED Lights for 5 seconds.
5. Plug in the LED Lights.
6. Press and Hold the PROGRAMMING button on the back of the Remote Transmitter ONLY until the LED Light Strips begin to light up, then release immediately.
7. Test the LED Lights.

Installing the Remote Transmitter Wall Post:

1. Attach the Wall Anchor to the wall using the supplied Screw and Threaded Anchor. See **Figure 3**.
2. Screw the Post to the Threaded Anchor. See **Figure 4**.
3. Place the Remote Transmitter on the Post. See **Figure 5**.

