



For Technical Support visit us at <http://ownerscorner.sunsetter.com> or

Call Toll Free 800-670-7071 • Fax 877-224-4944

Somfy® TaHoma®

Installation and Operation Instructions

WARNINGS:

- **FAILURE TO FOLLOW THESE INSTRUCTIONS CAN RESULT IN PERSONAL INJURY! PLEASE READ THESE INSTRUCTIONS IN ITS ENTIRETY BEFORE ATTEMPTING TO COMPLETE THIS PROCESS.**
- **IF WEATHER CONDITIONS PRESENT RISK OF HIGH WINDS, RAIN, OR SNOW, ENSURE THAT THE AWNING REMAINS CLOSED.**
- **BE SURE THAT NO OBJECT OR PERSONS CAN COME ON CONTACT WITH THE AWNING AS IT CLOSSES OR OPENS, WHILE UNATTENDED.**

TABLE OF CONTENTS

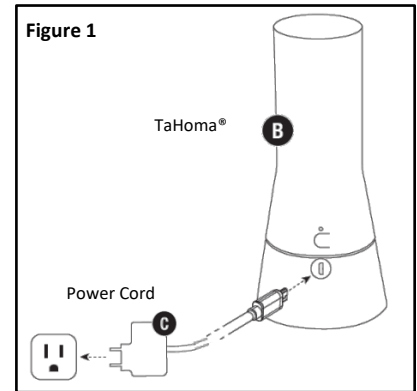
I.	INSTALLATION	2
II.	SET UP	5
	• Account Creation	
	• Connect Via WI-FI	
	• Connect Via Ethernet	
III.	COMMISSIONING	8
	• Add an RTS Product	
	• Add a Scene	
	• Add a Schedule to a Scene	
	• Create a Room	
	• Add Additional TaHoma® Devices	
IV.	SETTINGS	14
	• My Product	
	• My Setup	
	• Activity History	
	• Advanced Settings	
	• Third-Party Integration	
	APPENDIX	17
	A. Available Commands & Actions	
	B. Share TaHoma®	
	C. Forgot Password	
	D. WI-FI Status	
	E. Change WI-FI Network	
	F. Delete an RTS Product	

I. INSTALLATION

Install TaHoma® – Wi-Fi Configuration

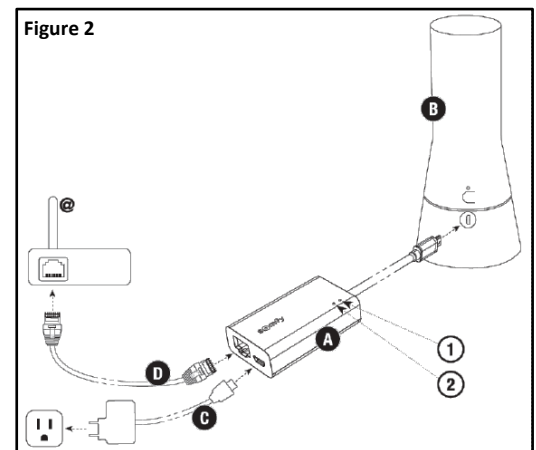
1. Select indoor location best suited for TaHoma® device.
 - a. For best performance, TaHoma® must be placed within 25-35' of the SunSetter product.
 - b. Connect micro USB end of power cord to Tahoma®. (See **Figure 1**)
 - c. Plug power cord into standard AC wall outlet.

NOTE: Must use Power Cord included with TaHoma®.



Install TaHoma® - Ethernet Configuration (Adapter Sold Separately)

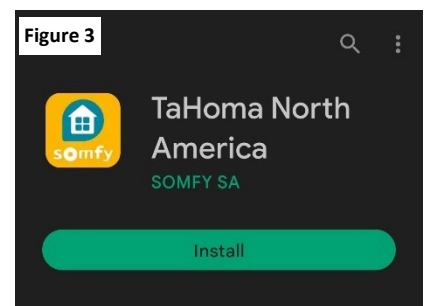
- A Ethernet Adaptor
- 1 Yellow light indicates data transfer
- 2 Green light indicates Ethernet connection
- B TaHoma®
- C Power Cord
- D Ethernet Cable
- @ Ethernet Router or Network Switch



Install TaHoma® North America App

NOTE: The TaHoma® app is compatible with IOS 11.0+ and Android 7.0+ operating systems.

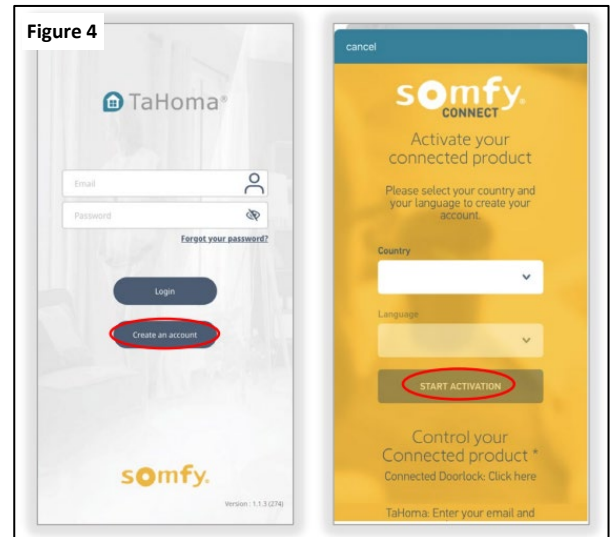
2. Download and open the "TaHoma® North America" app on an Android or IOS device.



II. SET UP

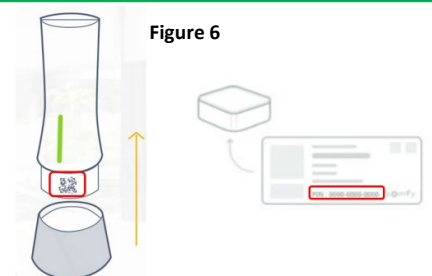
Set Up TaHoma® North America App

3. Select "create an account".
4. Select country and preferred language.
5. Select "start activation".
6. Select "Activate TaHoma®".
7. Enter the TaHoma® PIN code and select "OK".



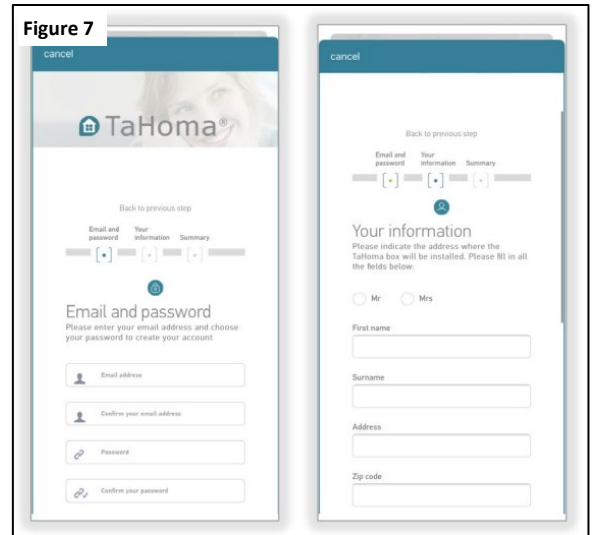
The PIN code is 3 series of digits on the TaHoma® and the packaging.

IMPORTANT: When scanning the QR code of a TaHoma®, only scan the QRR code on the base of the TaHoma®.

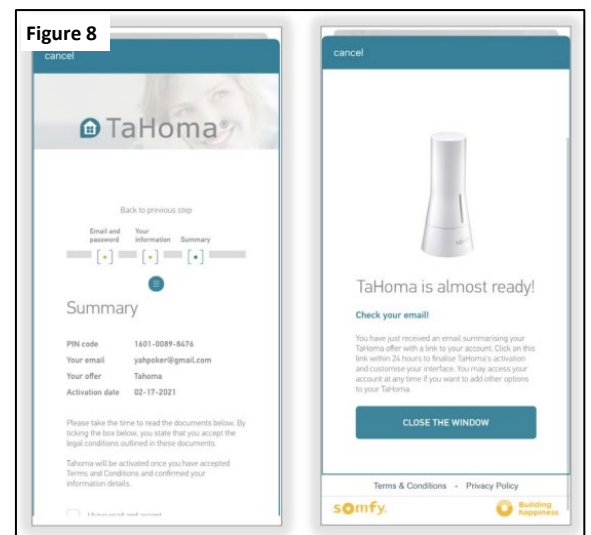


8. Enter and confirm the account email address and password, select "Continue".
9. Enter all fields, select "Save and Continue".
10. Review the information in the summary page and read all documents:
 - ✓ *Commercial Offer description and General Conditions of Services*
 - ✓ *Somfy Privacy Policy*

Check all boxes to accept the "Terms and Conditions", select "Confirm".



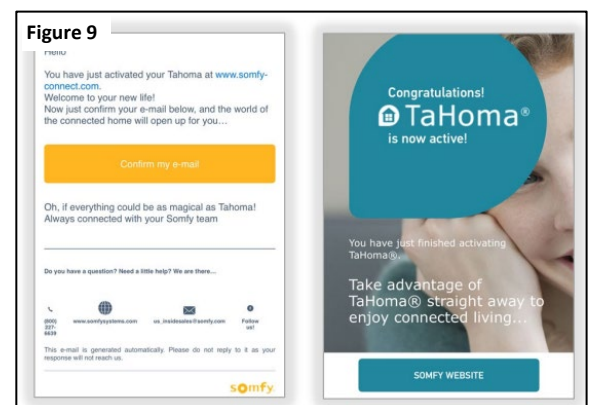
11. Select "Close the window"
 - An email from (info@somfy.com) will be sent summarizing your TaHoma® offer with a link to your account.
 - Click on the link within 24hrs to finalize TaHoma® activation and customize your interface.
 - In some cases, the email may be found in your junk/spam folder.



Email Sample

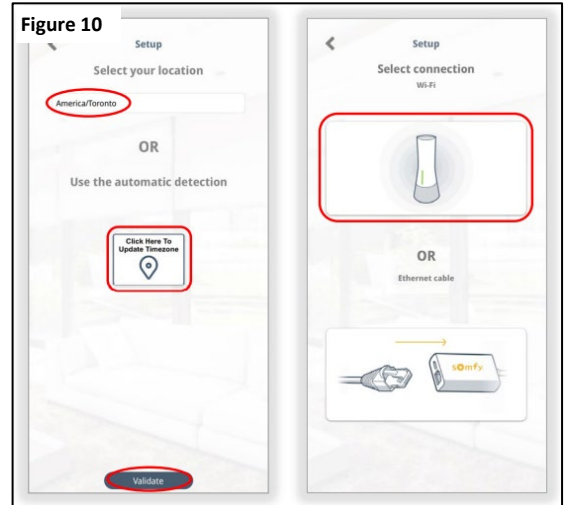
The Account has been created.

Close the window and check for an email.

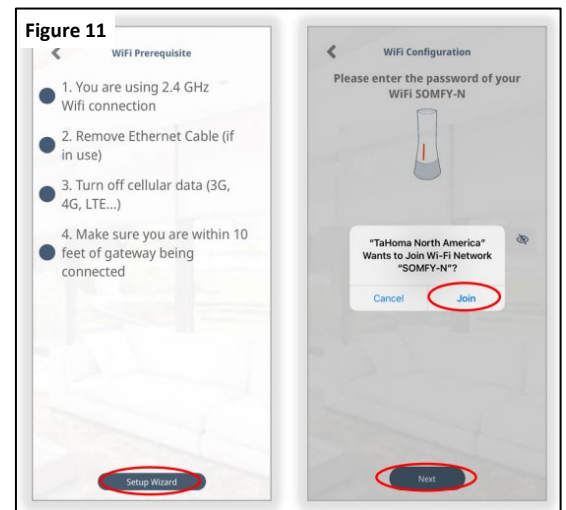


Connect Tahoma to Active Internet Connection Via Wi-Fi

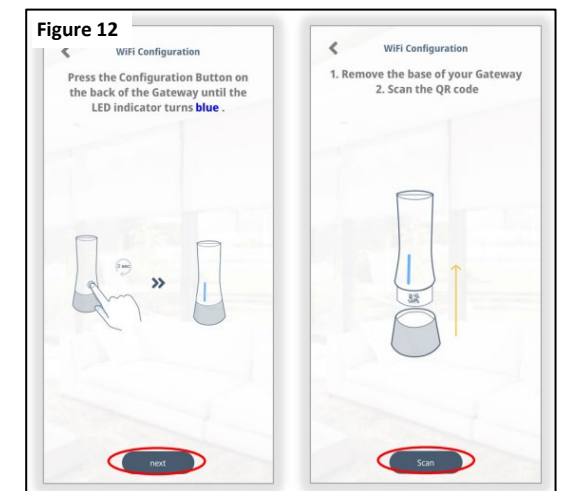
12. Connect the mobile device or tablet to the same Wi-Fi network that TaHoma® will be connecting to.
13. Login to the Somfy® TaHoma® North America App.
14. Select location.
OR
select "Click Here to Update Timezone".
Select "Validate".
15. Select "Wi-Fi".



16. Check all Wi-Fi prerequisites (see **Figure**), select "Setup Wizard".
17. Enter the password for the Wi-Fi Network, Select "Next".
18. Select "Join".



19. PRESS and HOLD the configuration button on the back of the TaHoma® for 3 seconds until the LED indicator turns BLUE, select "Next".
20. Select "Scan".
21. Remove the base of the TaHoma®, Scan the QR code with your device's camera.



22. Select “Join”.
 - Allow TaHoma® to connect to devices on your local network.
 - LED indicator will change from RED to GREEN.

23. After the “Congratulations, your Wi-Fi is now configured...” note appears, select “Finish”.

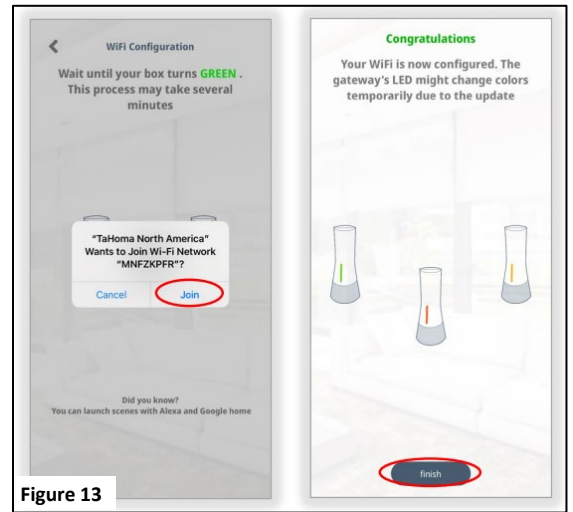


Figure 13

Wi-Fi is now connected.

To change the Wi-Fi network, refer to “Change Wi-Fi Network” in Appendix E.

CHECK WI-FI STRENGTH

From the TaHoma® app home page, select the Menu button in the bottom right corner.



Figure 14

CHECK TAHOMA® CONNECTION STATUS

The TaHoma® icon in the top right corner of the TaHoma® menu page will indicate connection status:

GREEN – Connected to the network

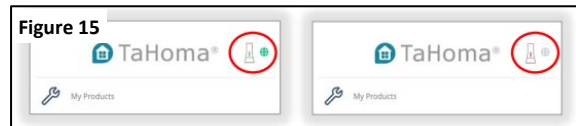


Figure 15

Connect TaHoma® to Active Internet Connection Via Ethernet (Adapter Sold Separately)

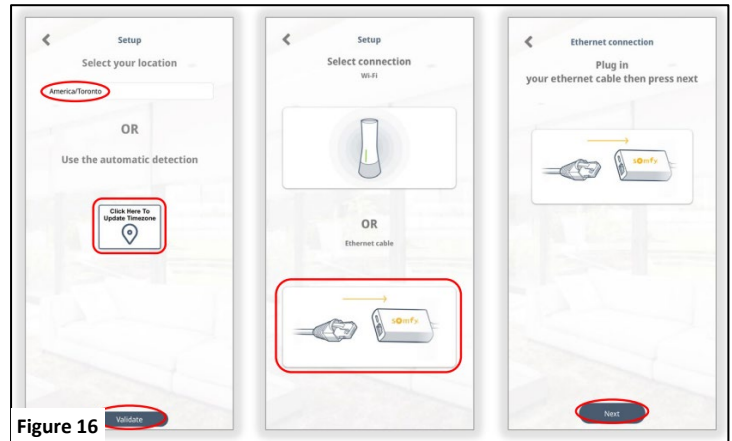
NOTE: An internet connection is required. TaHoma® does not support local control to operate any RTS products without an internet connection.

Follow the steps below to connect TaHoma® using the TaHoma® Ethernet Adaptor:

An Ethernet connection method provides more reliability and stability when compared to a Wi-Fi connection.

All Wi-Fi connections are prone to radio interference from other radio frequencies in the air or items with metallic properties.

24. Login to the Somfy® TaHoma® North America App.
25. Select location.
OR
Select "Click Here to Update Timezone".
Select "Validate".
26. Select "Ethernet Cable".
27. Plug in the network cable to the TaHoma® Ethernet Adaptor (#1870470 sold separately), select "Next".

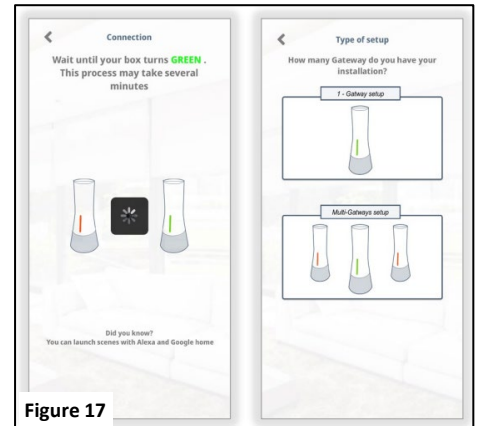


LED indicator will change from RED to GREEN stating that it is now connected.

LED will then change to RED followed by ORANGE during the update process. Once complete, LED will change to GREEN.

This may take several minutes.

28. Select "Type of setup":
One TaHoma® setup (single room control).
OR
Multi-TaHoma® setup (whole house control).



The Ethernet connection is now complete.

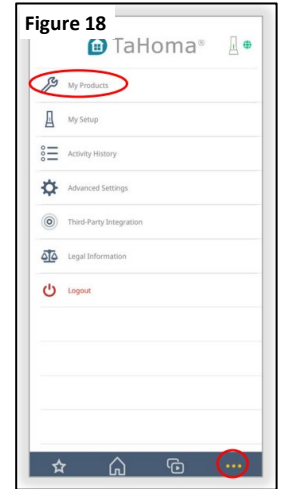
To change to Wi-Fi connection, refer to the Connect via Wi-Fi section of this Guide. To add a motor, refer to the COMMISSIONING section of this Guide.

III. COMMISSIONING

Add an RTS Product

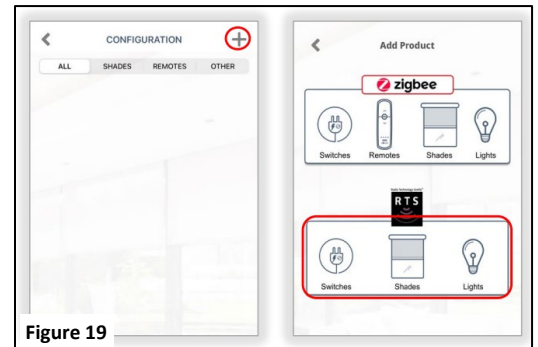
NOTE: RTS (Radio Technology Somfy®): The technology which allows remote transmitter control of Somfy® products.

- 29. From the TaHoma® app home page, select the Menu icon.
 - In the bottom right corner, select "My Products".



- 30. Select the "+" icon in the top right corner.
- 31. Select "RTS".

NOTE: Zigbee is not available at this time.

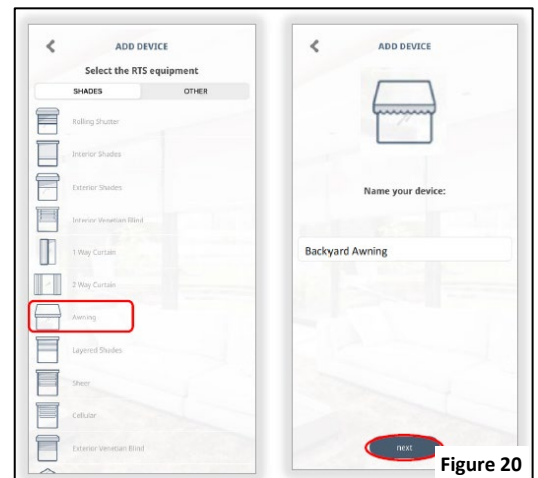


- 32. Select the RTS product from the list:

- *Select the proper device to be programmed.*

- SunSetter products will be "Awning" or "Exterior Shade" on the "Shades" tab; or "Dimmable Light" on the "Other" tab.

- 33. Enter a name for your device, then select "Next".



34. Find the remote that controls your SunSetter product.

- Confirm that your remote is on the channel that operates your SunSetter product.
Awnings and EasyShades are preset to operate on Channel 1. LED Lights are set to operate on Channel 2.
- Select “Next” on the App screen.
Note: RTS product must be paired to an RTS control point (remote) before completing this step.

35. PRESS and HOLD the programming button on the back of the RTS remote until the motor moves up and down briefly, or LED light kit slow blinks.

NOTE: Make sure both TaHoma® and RTS remote are in range of the motor. If the product does not respond, try again by moving closer to the RTS product. Do not move to the next step until the motor responds.

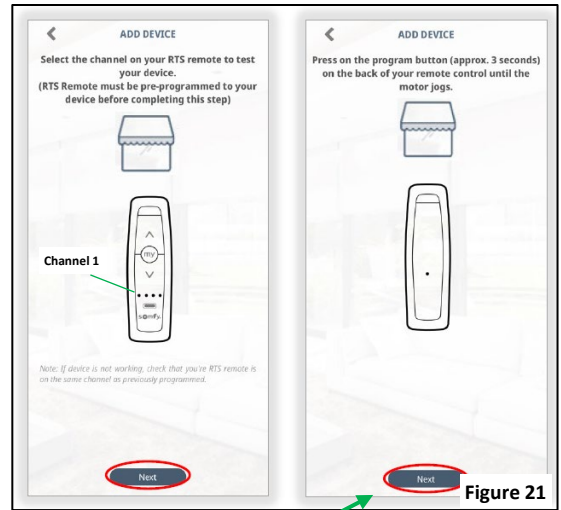


Figure 21

36. Select “Next” – **Select “Next” ONLY AFTER the RTS product has responded (motor jog or LED light kit slow blinks).**

37. Test to ensure product is operational: select "Open" or "Close".

See Appendix A (pg. 17) for description of Open and Close commands.

38. Select “Yes”.

39. Select “Finish” to complete the setup,

OR

Select “Add more devices” to add another product to create a group channel.

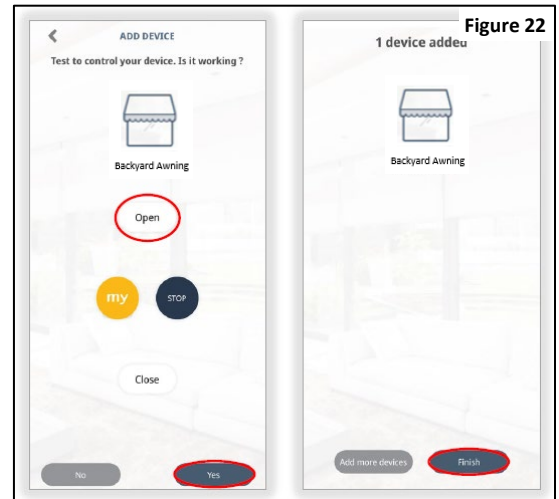


Figure 22

An RTS product has been added.

IMPORTANT: When adding an RTS product to a multi-TaHoma® system, scan the TaHoma® QR code closest to that RTS product.

To favorite the RTS product, select the “Star” icon.

To edit the product, select the “Pencil” icon.

To delete the product, refer to “Delete An RTS Product” in Appendix F.

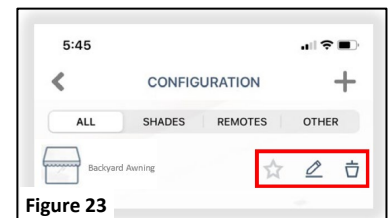


Figure 23

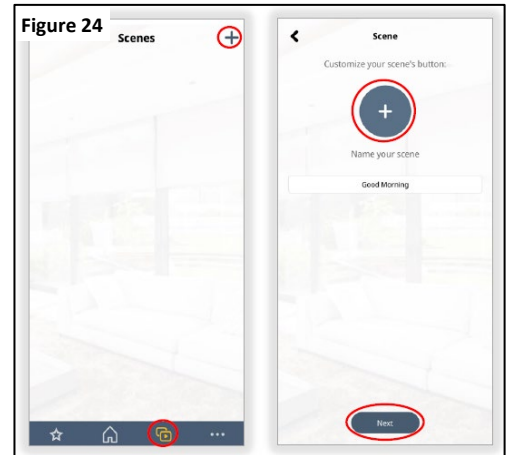
Add a Scene

A TaHoma® system can support a maximum of 40 scenes with schedules.

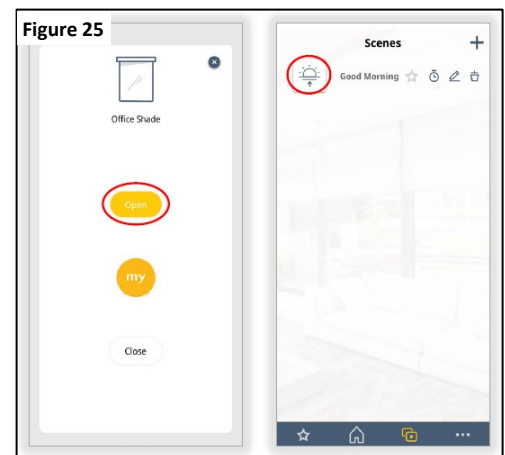
Creating a scene will provide a specific setup for your products at your desired time of day.

For example, you may want to create a scene called "Wake Up", which tells your Awning(s) and/or EasyShade(s) to extend at 8:00 am to begin keeping the hot summer sun at bay.

40. Select the "Scene" icon from the bottom menu.
41. Select the "+" icon in the top right corner.
42. Select the large "+" icon, select an icon to represent the scene, enter a name for the scene.
Example: Good Morning
43. Select "Next".



44. Select the RTS product to be added to the scene
Example: Backyard Awning.
45. Select a command for the RTS product, select "X" in the top right corner.
Example: Open
46. Select "Next".
47. To test the scene, select the Icon to activate.



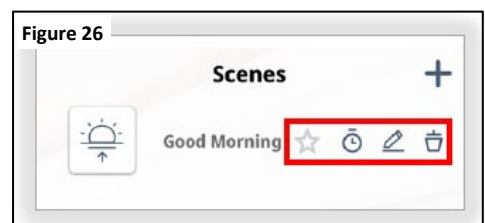
The Scene has been created.

To set the Scene as a favorite, select the "Star" icon.

To edit the Scene, select the "Pencil" icon.

To delete the Scene, select the "Trash" icon.

To create a schedule for this Scene, refer to the ADD A SCHEDULE TO A SCENE section of this Guide.



Add a Schedule to a Scene

A TaHoma® system can support a maximum of 40 scenes with schedules.

NOTE: Scheduled scenes will continue to operate at the scheduled time even after internet connection has been lost.

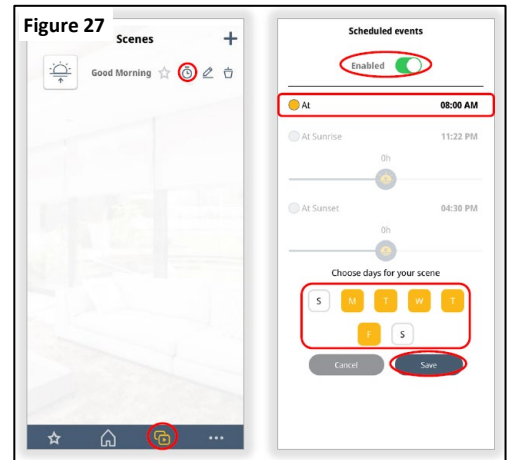
48. Select the "Scene" icon from the bottom menu.
49. Select the "Clock" icon next to the scene to be scheduled.
50. Toggle "Enabled" to the ON position.
51. Select a condition:

"At" - set a start time.

Example: 8:00 AM

"At Sunrise" – use location to set sunrise time. Use the slider to offset the sunrise time by up to 1hr before or after.

"At Sunset" – use location to set Sunset time. Use the slider to offset the sunset time by up to 1hr before or after.



52. Select the days to be scheduled.

53. Select "Save".

NOTE: Clock icon will be orange when activated and grey when deactivated.



The Schedule has been created.

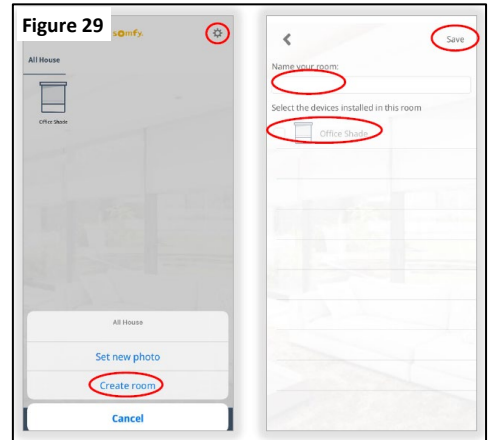
To edit the schedule, select the "Clock" icon.

To disable the schedule, select the "Clock" icon and toggle the "Enabled" button to the OFF position.

Create a Room

Create rooms to organize RTS products. A maximum of 50 rooms can be created.

54. Select the “Home” icon from the bottom menu.
55. Select the “Gear” icon in the top right corner.
56. Select “Create room”.
57. Name the room.
58. Select the RTS product to be added.
59. Select “Save”.



The Room has been created.

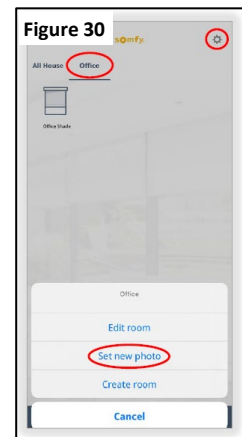
To edit the Room or delete the Room, select the "Gear" icon, select "Edit Room”.

Note: “All House” room cannot be deleted.

Set Photo to a Room

Add a photo to easily distinguish the room.

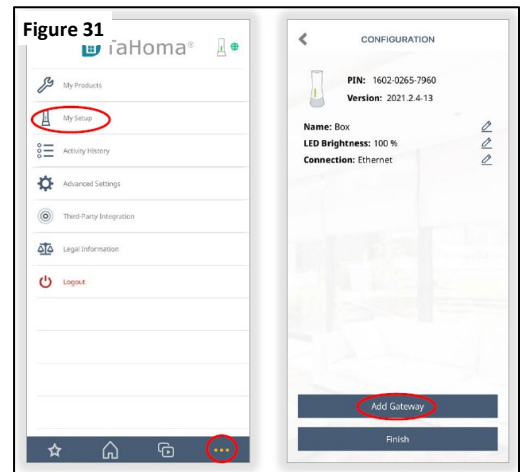
- 1) Select the room to add an image to.
- 2) Select the “Gear” icon.
- 3) Select “Set new photo”.



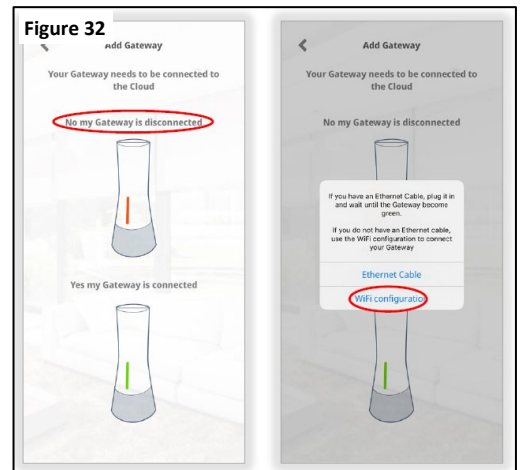
Add Additional TaHoma® Devices

Add additional TaHoma® Devices for whole home control or single room control.

60. From the TaHoma® app home page, select the Menu icon in the bottom right corner.
61. Select “My Setup”.
62. Select “Add Gateway”.



63. Select one of the two options:
 - No, My Gateway is disconnected.
 - Yes, My Gateway is connected.
64. Select one of the two options:
 - Ethernet Cable Configuration
Requires TaHoma® Ethernet Adapter #187070 (sold separately)
 - Wi-Fi Configuration
65. Refer to the “Connect via Wi-Fi” section of this Guide (pg. 5) to continue with setup.



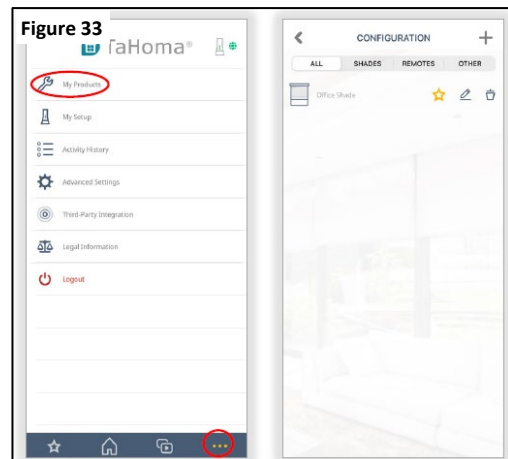
The additional TaHoma® has been added.

IMPORTANT: When adding an RTS product to a multi-TaHoma® system, scan the TaHoma® closest to that RTS product.

IV. SETTINGS

My Product: Used to add, delete, and edit RTS products

1. From the TaHoma® app home page, select the Menu icon in the bottom right corner.
2. Select “My Products”.
 - Add RTS product (+ icon)
 - “Favorite” an RTS product (star icon)
 - Edit a product (pencil icon)
 - Device name
 - Add a device to this group
 - Remove a device from this group
 - Test the device (see note below)
 - Delete a product (trash bin icon)

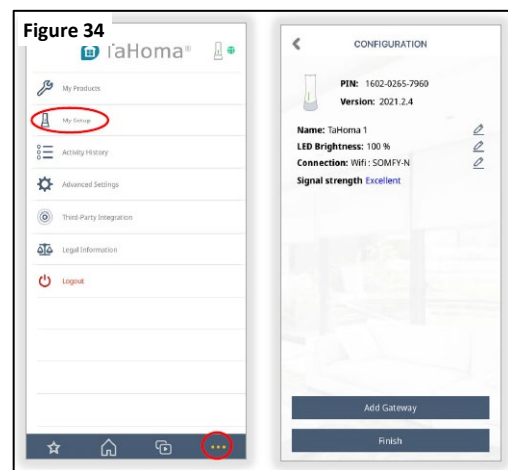


NOTE: If the test button is pressed, and the motor is at the upper limit, the shade will move down after 5 seconds to the lower limit.

If the test button is pressed and the motor is at the lower limit, the shade will move up for 5 seconds then back down to the lower limit.

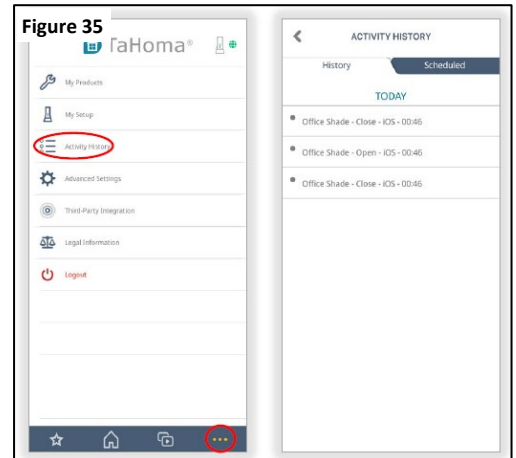
My Setup: Used to configure the TaHoma®

1. From the TaHoma® app home page, select the Menu icon in the bottom right corner.
2. Select “My Setup”.
 - View TaHoma® PIN and Version.
 - Name the Interface - Change the name of the TaHoma® Interface.
 - LED Brightness - Change the LED brightness. (0%-100%)
 - Connection – shows connection type: (Ethernet or Wi-Fi) and SSID of the network connected for Wi-Fi
 - Signal strength – Strength of the connected Wi-Fi Network
 - Add Gateway (Add up to a maximum of 10 TaHoma® devices)



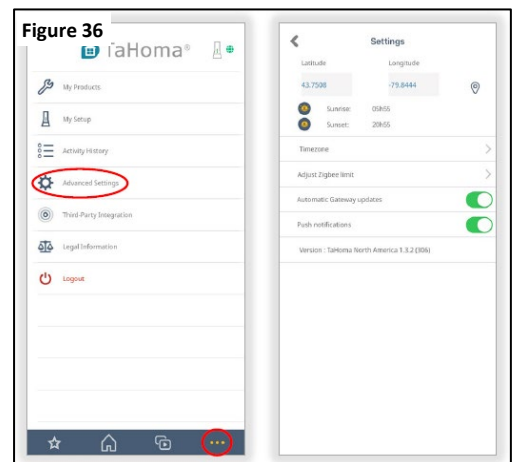
Activity History: Used to view all commands sent from Android or IOS devices and any schedules that have launched.

1. From the TaHoma® app home page, select the Menu icon in the bottom right corner.
2. Select “Activity History”
 - History of all commands
 - History of all scheduled commands



Advanced Settings: Used to set location, time zone, turn on automatic updates, turn on push notification, and view TaHoma® app version.

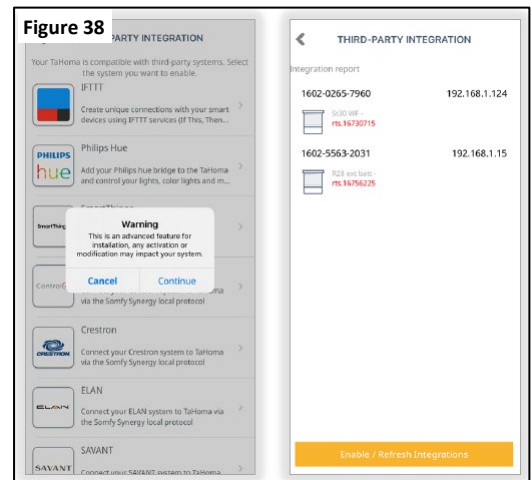
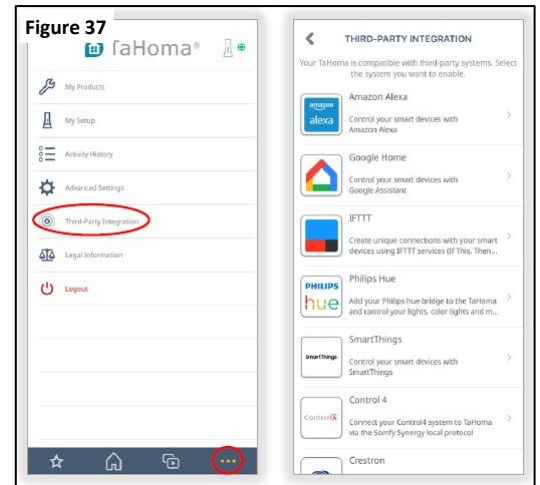
1. From the TaHoma® app home page, select the Menu icon in the bottom right corner
2. Select “Advanced Settings”
 - **Set location** –use GPS location to set Sunrise and Sunset time
 - **Time zone** – Set time zone from a list or automatically
 - **Automatic Gateway updates** – Toggle ON to auto update (OFF by default)
 - **Push Notification** – Toggle ON to get information about the status of your TaHoma® or RTS products (OFF by default)
 - **View TaHoma® App version**



Optional: Third-Party Integration

TaHoma® is compatible with various third-party systems.

1. From the TaHoma® app home page, select the Menu icon in the bottom right corner.
2. Select “Third-Party Integration”
 - **Amazon Alexa** – Control devices with Alexa
 - **Google Home** – Control devices with Google Assistant
 - **IFTTT** – use If This Then That to create unique connections with your devices
 - **Philips Hue** – Add a Hue Bridge to control lights
 - **SmartThings** – Control devices with SmartThings
 - **Control4** – Connect a Control4 system to TaHoma®
 - **Crestron** - Connect a Crestron system to TaHoma®
 - **ELAN** - Connect an ELAN system to TaHoma®
 - **SAVANT** - Connect a SAVANT system to TaHoma®
 - **URC** - Connect a URC system to TaHoma®
 - **RTI** - Connect an RTI system to TaHoma®
 - **Brilliant** - Connect a Brilliant system to TaHoma®
3. Follow the prompts and refer to the integration guides at <https://www.somfypro.com/tahoma-documentation>.



An Integration Report is generated in the TaHoma® App which will include the TaHoma® PIN and IP address.

Third-Party Integration must first be enabled in the TaHoma® App.

APPENDIX

[Appendix A] Available Commands & Actions

TaHoma® RTS Product	
Open/Raise/Extend	Moves EasyShade to up position. Moves Awning to open/extended position.
Close/Lower/Retract	Moves EasyShade to down position. Moves Awning to closed/retracted position.
On/Off	Turns LED Lights on or off.
+/-	Dims or brightens LED Lights.

[Appendix B] Share TaHoma®

To Share TaHoma® with a family member, the same login credentials used to create the account must be used to login with another device.

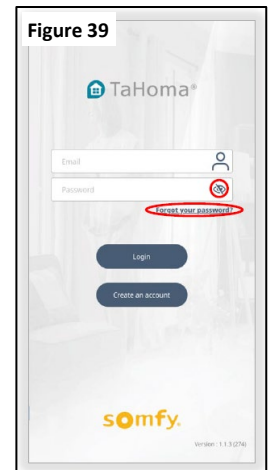
[Appendix C] Forgot Password

1. From the TaHoma® App home page, select the Menu icon in the bottom right corner.
2. Select “Logout”.
3. Select the “Eye” icon next to password section to view the password.

OR

Select “Forgot password” to reset.

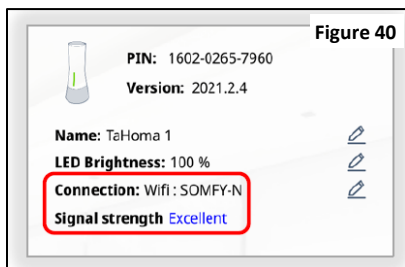
NOTE: An email will be sent to the registered email address with a link to change the password.



[Appendix D] Wi-Fi Status

Check Wi-Fi Strength

From the TaHoma® app home page, select the Menu icon in the bottom right corner, select "My Setup"

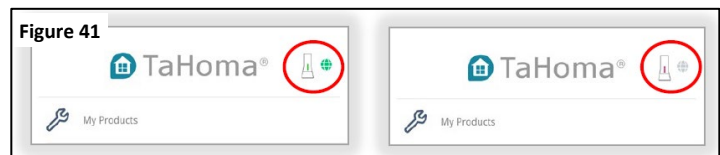


CHECK TAHOMA® CONNECTION STATUS

The TaHoma® icon on the top right corner of the TaHoma® menu page will indicate connection status:

GREEN – Connected to the network

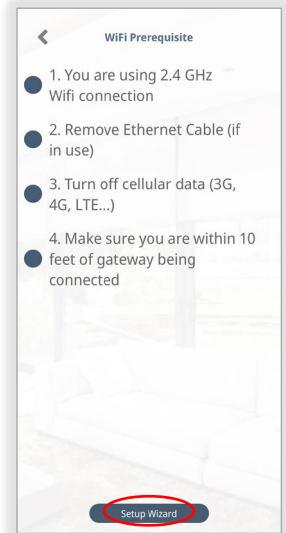
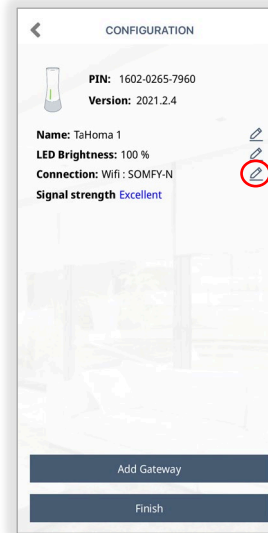
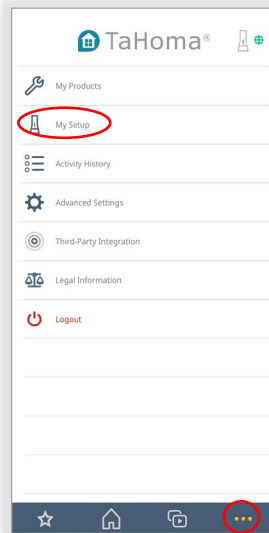
RED – Disconnected from the network



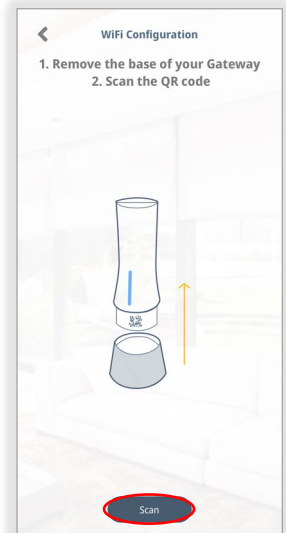
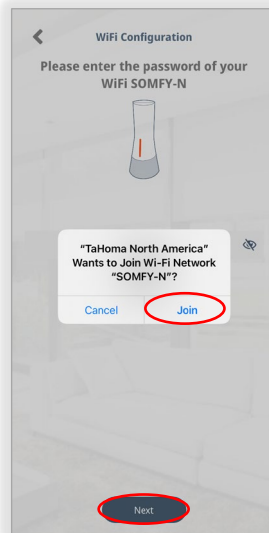
[Appendix E] Change Wi-Fi Network

Follow the steps below to change to a different Wi-Fi network, to update the Wi-Fi password for the network or to switch from an Ethernet (wired) connection:

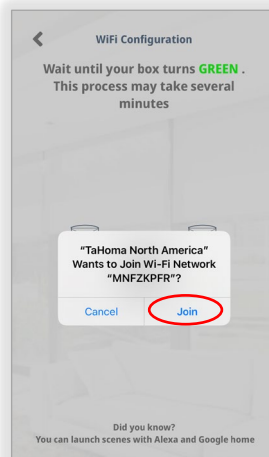
1. From the TaHoma app home page, SELECT the Menu icon in the bottom right corner, SELECT "My Setup"
2. SELECT the "Pencil" icon next to "Connection"
3. Check all Wi-Fi Prerequisites, SELECT "Setup Wizard" - SELECT "Setup Wizard"
IMPORTANT: Ensure that your mobile device or tablet is connected to the same Wi-Fi network that TaHoma will be connecting to.



4. ENTER the password for the Wi-Fi network, SELECT "Next," SELECT "Join"
5. PRESS and HOLD the configuration button on the back of the Interface for 3 seconds until the LED indicator light turns BLUE, SELECT "Next"
6. SELECT "Scan," REMOVE the base of your Interface and Scan the QR code with your device's camera

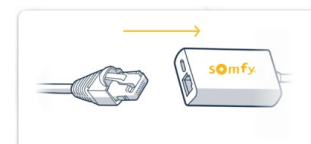


7. SELECT "Join"
NOTE: Allow TaHoma to connect to devices on your local network; LED indicator will change from RED to GREEN.
8. Once successful, the screen will read "Congratulations" SELECT "Finish"



Wi-Fi network is changed and connected.

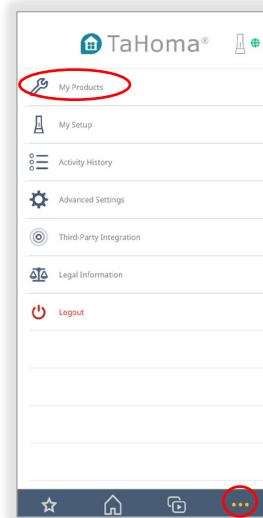
To switch from a Wi-Fi connection to a wired connection using an Ethernet cable, plug the Ethernet Adaptor into the TaHoma and connect an Ethernet cable to the adaptor. Connection will establish and the TaHoma LED will turn GREEN.



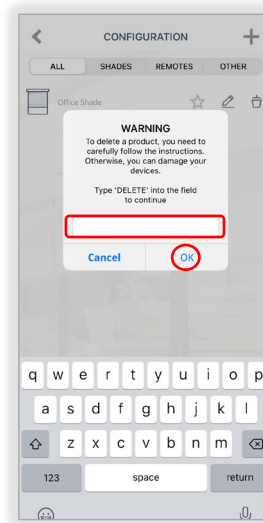
[Appendix F] Delete an RTS Product

Follow the steps below to delete an RTS Product:

1. From the TaHoma app home page, SELECT the Menu icon in the bottom right corner, SELECT "My Products"
2. SELECT the "Trash" icon next to the RTS Product to be deleted



3. Type "DELETE" in all caps, SELECT "OK"



Thank you for Choosing SunSetter