



RETRACTABLE AWNINGS

For Technical Support visit us at [www.sunsetter.com/ownerscorner](http://www.sunsetter.com/ownerscorner) or Call Toll Free 800-670-7071 • Fax 877-224-4944

## Weatherbreaker Side Panel for Motorized Awning Installation Instructions

**Tools Needed:** Pencil, 1/8" Drill Bit, Electric Drill, Step Ladder, 1/4" Nut Driver or Socket, Measuring Tape, Hammer.

**For masonry installation:** 3/16" Masonry Drill Bit.

**Parts Enclosed:** Weatherbreaker Side Panel, two (2) Wall Hooks, two (2) Mounting Screws, two (2) Cords, one (1) Cord-Lock (Housing Gear), two (2) Front Bar Inserts, two (2) Eyebolts with Nuts, two (2) 3/16" Plastic Anchors.

**CAUTION: FAILURE TO WEAR SAFETY GLASSES OR TO FOLLOW THE INSTRUCTIONS BELOW CAN RESULT IN PERSONAL INJURY!**

1. Mark a level horizontal line extending from the Top Bolt Hole of the Wall Bracket to 1" beyond the end of the Square Bar of the Awning.

**Note:** If a Hood is installed, extend this horizontal line beyond the Hood End Plate. See Figure 1.

2. Draw a vertical line extending up from the end of the Square Bar that intersects with the horizontal line that you marked in step 1.

See Figure 1.

3. At the intersection,

- **For Wood frame installation:** drill a 1/8" pilot hole approximately 1-1/2" deep.
- **For Masonry installation:** drill a 3/16" hole approximately 1-1/2" deep. Insert a supplied plastic anchor into the hole and drive it flush with a hammer.

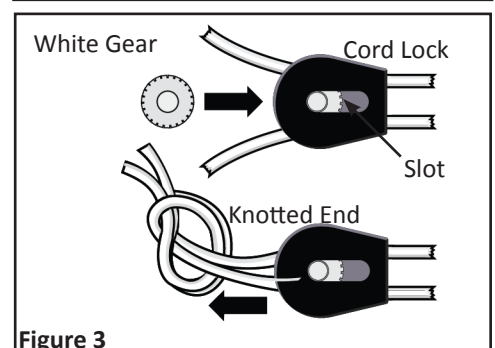
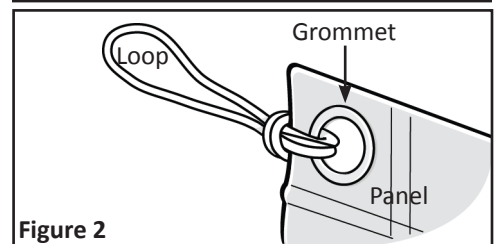
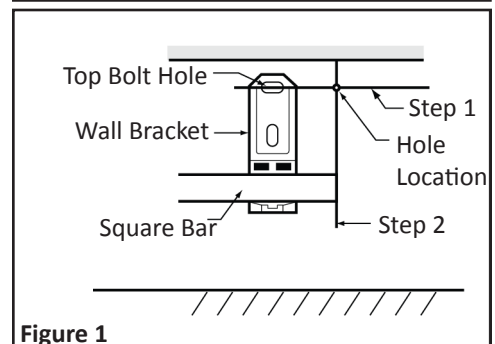
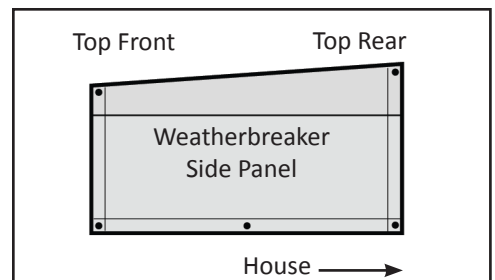
4. Attach the Wall Hook by securing with the supplied #8 x 1-1/2" screw.

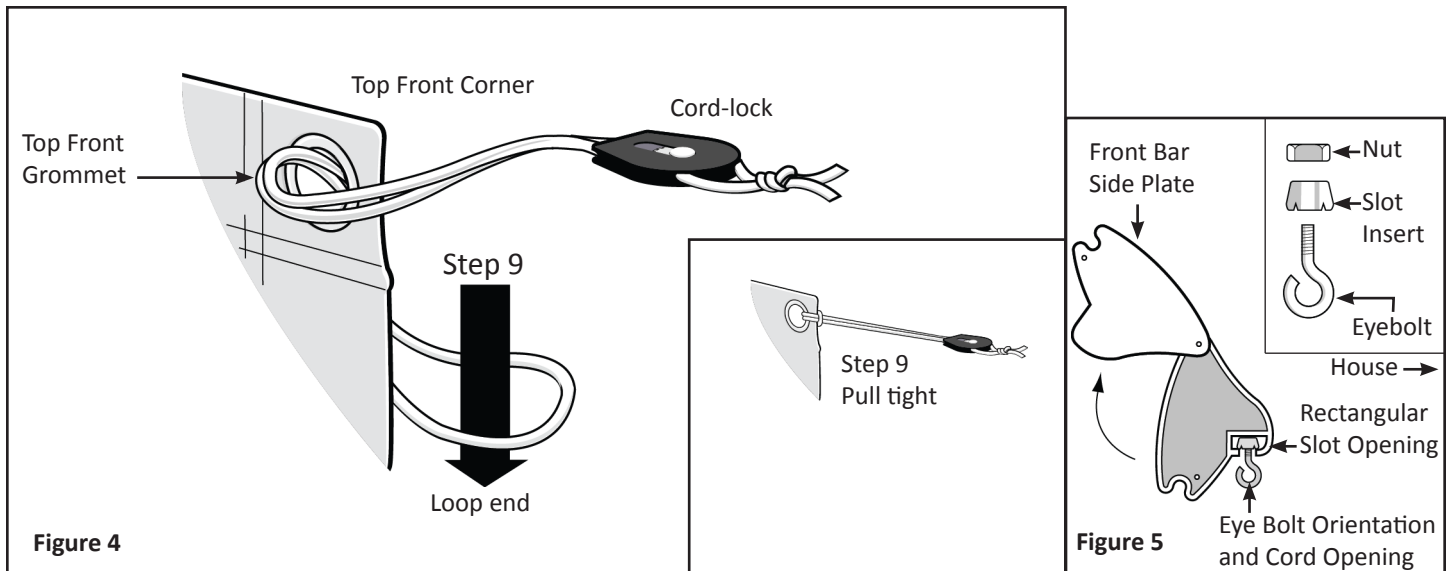
5. Tie one of the supplied Cords to the Panel as shown. See Figure 2.

6. Slide the two ends of the second Cord through the Cord-lock from the smaller (flat edge) side to the larger (curved) side. (Do not pull the entire Cord through). Hold the Cord-lock in the center of the Cord and separate the two ends of the Cord. See Figure 3.

7. Slide the White (round) Gear into the large (curved) open end of the Cord-lock housing until the Gear pops into place. Be sure that the part of the Gear that protrudes is aligned with the slot in the Cord-lock housing. Tie the two ends of the Cord so that they cannot slide back through the Cord-lock. Slide the Cord-lock all the way towards the knot on the Cord.

*Continued on next page...*





**8.** Slide the Loop End of the Cord through the top front Grommet as shown, outside of arc to inside of arc. See Figure 4.

**9.** Slide the knotted end of Cord and the Cord-lock through the loop of Cord on the other side of the Grommet as shown in Figure 4. Pull the rope tight.

**10.** Using a Phillips screwdriver, remove the bottom screw on the Front Bar Side Plate (see Figure 5). Slightly loosen the top screw but do not remove.

**11.** Rotate the plate up to allow access to the Rectangular Slot Opening in the Front Bar. Assemble a Slot Insert, Eyebolt and Nut as shown in Figure 5. Insert this assembly into the Rectangular Slot in the Front Bar. Rotate the Side Plate back into place and replace the Phillips screw, tighten both screws.

**12.** Slide the Eyebolt assembly back against the Side Plate and tighten. Orient the Eyebolt as shown in Figure 5.

## Setup

- Place the loop of Cord (attached to the Grommet on the back of the Panel) over the Hook that you installed on the wall.
- Insert the double Cords that go through the Cord-lock into the opening in the Eyebolt. Tighten the Panel by holding the sides of the Cord-lock and pulling the Cord. The Gear of the Cord-lock should move forward to hold the Cords at this point.

## Removal

- Slide the Gear of the Cord-lock back to loosen the Cord.
- Remove the Cords by sliding them out of the opening in the Eyebolt.
- Remove the Cord loop from the Hook on the house.

**Note: Remove the Weatherbreaker Panels before closing the Awning.**

**WARNING - DO NOT LEAVE YOUR MOTORIZED AWNING EXTENDED UNATTENDED OR DURING EXCESSIVE WINDY OR RAINY CONDITIONS.**